

Materials

02. Saddle Leather (REV.05)



02.010
Black



02.200
Grey



02.201
Pine Bark



02.204
Elephant



02.240
Ash Grey



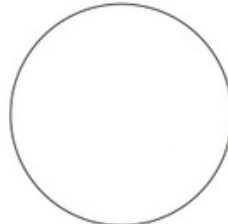
02.260
Ice Grey



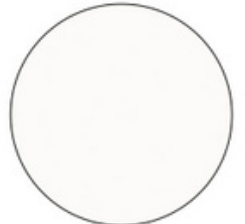
02.262
Cloud Grey



02.264
Feather Grey



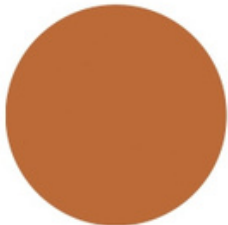
02.300
White



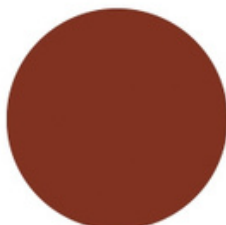
02.301
Off White



02.402
Nude



02.450
Biscuit



02.451
Sierra



02.455
Sequoia



02.460
Champagne



02.461
Hay



02.515
Capuchin



02.600
Dark Brown



02.610
Coffee Brown



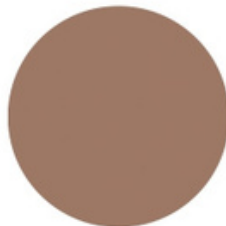
02.613
Sepia



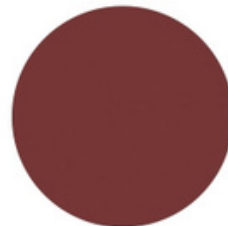
02.615
Rum



02.616
Chocolate



02.620
Walnut Brown



02.700
Russia Red



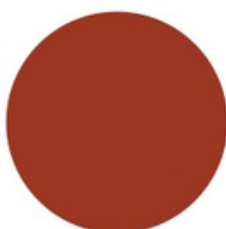
02.710
Red



Price List 2021



02.713
Orange



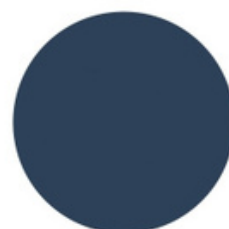
02.714
Rust



02.802
Sage



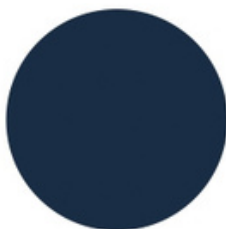
02.808
Undergrowth



02.900
Blue



02.920
Yellow



02.950
Dark Blue

Frag 02 Saddle leather represents a perfect balance of thickness, elasticity, tactility and stiffness in a superb product of European origin, tanned in Italy. It is resistant to wear and stretching, and retains its colour in normal use. Only a small and specially designed selection

of four products can be made with this rich material, which is durable and easy to maintain. It is processed entirely in Italy, where total control of the production process and treatments guarantees quality and durability.

Thickness: 1,8 / 2,0 mm
Leather type: European bovine leather
Tanning: Chromium salt (mineral)

Dyeing: Through dying aniline
Finishing: Pigment finishing
Final look: Smooth

Dry rub fastness	I.U.F / 450	1.000 cycles \geq 4 Grey Scale
Wet rub fastness	I.U.F / 450	250 cycles \geq 4 Grey Scale
Artificial solution rub fastness	I.U.F / 450	80 cycles \geq 4 Grey Scale
Fastness to light	I.U.F / 401	72 h esp. \geq 4 Grey Scale
Adhesion of finishing	I.U.P / 470	15 N / 10 mm
Flexing endurance	I.U.P / 20	20.000 cycles: No damage
Taber abrasion	TABER	500 cycles wheel CS10 load 500 gr \geq 4 Grey Scale
Fire reaction tests	BS 5852/90 Cigarette test / Match test California Technical Bulletin 117:2013 Section E Part 1 UNI 9175 2 I EMME Senate Bill (SB) 1019 Upon request we can make leathers complies 1 I EMME and CRIB 5.	